

## WARNING

Because wall vertical surface vary from job to job, it is mandatory that you consult with the appropriate local engineer and architect to ensure that the mounting brackets are property mounted on the wall to handle the appalled loads.

Maximum load 18 lb.

The wall mount kit is designed for LCD monitors with VESA standard 75 mm or 100 mm

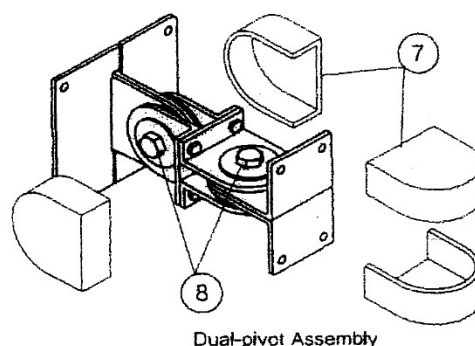
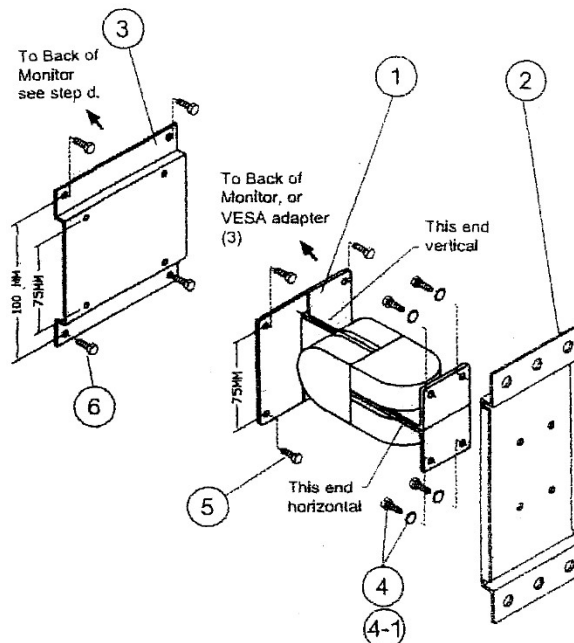
### 1. Parts in the assembly:

- (1) Dual-pivot assembly (1 assy).
- (2) Wall plate (1 piece).
- (3) VESA adapter, option, used for LCD monitor with VESA STD 100 mm.
- (4) Screws, hex head 1/4"-20, 1/2" L (4 pcs).
- (4-1) Spring washer, for screw size 1/4" (4 pcs).
- (5) Screws, hex head, Phillips, M4, 7 pitch x 10 mm (4 pcs).
- (6) Screw hex head, M4, 7 pitch, 12 mm length (4 pcs).
- (7) ABS caps, included in assembly (1).
- (8) Adjustable screw set, included in assembly (1).

### 2. Tools needed: Wrench, Screw Driver

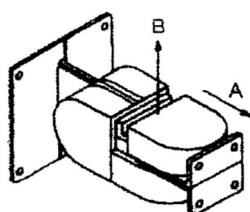
### 3. Installation:

- a. Install wall plate (2) onto the wall/vertical surface. Consult with local engineer for proper mount.
- b. Use screw (4) and spring washer (4-1) to install Dual-pivot assembly (1) on the wall plate (2) along the proper direction, refer to right illustration.
- c. If the VESA STD is 75 mm in the back of monitor, use 4 screws (6) to install LCD monitor on the Dual-pivot assembly (1) directly.
- d. If 4 thread holes on the back of monitor are 100 mm apart, first use screws (5), M4, 10 mm length to install VESA adapter (3) onto assembly (1), then install monitor onto VESA adapter (3) by using screw (6).
- e. Tighten or loosen adjustable screw set (8), so the monitor can swivel freely and stay at desirable angle firmly. For adjustment, take off 4 ABS caps (7)\* from Dual-pivot assembly (1), see instruction \* below.
- f. When adjustment done, put 4 ABS caps back.



\* To take off ABS caps from Dual-pivot assembly, first move the cap along the direction "A" until touching the metal plate, then pull the cap up along the direction "B", refer to the figure below. Similarly steps for reset caps.

Reverse the above steps for installing the caps.

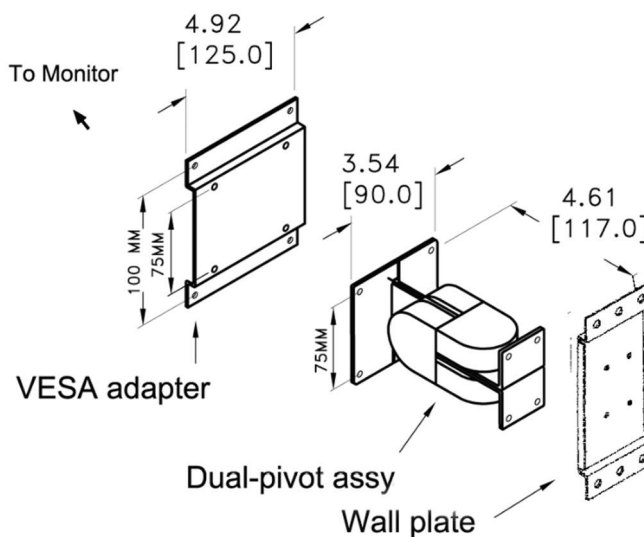


## PRODUCT SPECIFICATION

**MODEL: Wall Mount Kit TWM-158**

### Product Features:

- Low cost
- Support up to 18 lb (9 kg)
- Designed for LCD monitor with VESA STD 100 mm
- Wide tilt angle
- Lightweight for easy, fast installation



## TECHNICAL SPECIFICATIONS

### Mechanical

#### Components

Dual-pivot 1 assembly

Wall plate 1 piece

VESA adapter 1 piece

#### Tilt Adjustment

Left-Right: 70 °

Up-Down: 90 °

#### Monitor Mounting

Four M4, 0.7 pitch machine screw

Zinc-Plated steel grade 2

#### Wall Plate Mounting

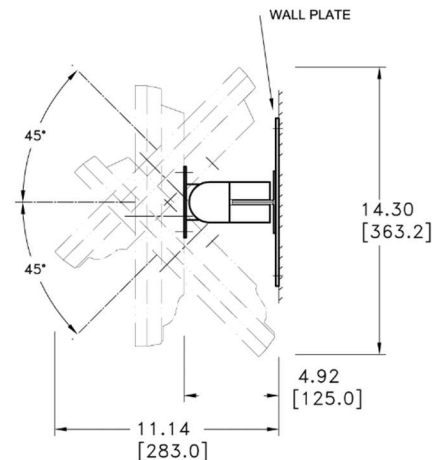
Consult with local engineer for proper mount, ensure where wall surface has enough strength

#### Finishing

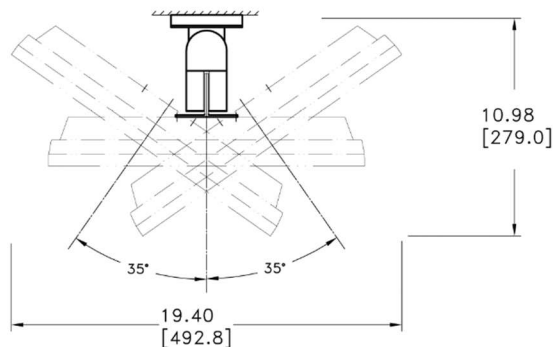
Black paint baking finish

#### Maximum Load

18 lb (9 kg)



**SIDE VIEW TILT UP-DOWN**



**TOP VIEW TILT LEFT-RIGHT**