

Introduction

The ED-G is an IP video encoder, decoder and public announcement system combo device. It features H.264 real-time video compression for encoding analog video to IP or decoding IP video to analog, making the ED-G an ideal component of any surveillance solution that requires both IP and analog streams.

Features

- H.264 or MPEG4 selectable compression
- NTSC/PAL support
- RS-485/422, 232 supports
- DI/DO bi-directional contact closure

Downloads

Full specifications, features and additional information can be found on the relevant product page on the KBC website as well as in the downloads section: <http://www.kbcnetworks.com/downloads>

Precautions

- Do not attempt to open, disassemble, or modify the device
- Do not use a third-party power adapter
- Do not expose this device to temperatures outside of the range of -10° C to +55° C
- Do not expose the ED-G to environments outside of the following humidity range: 10-90% RH (non-condensing)

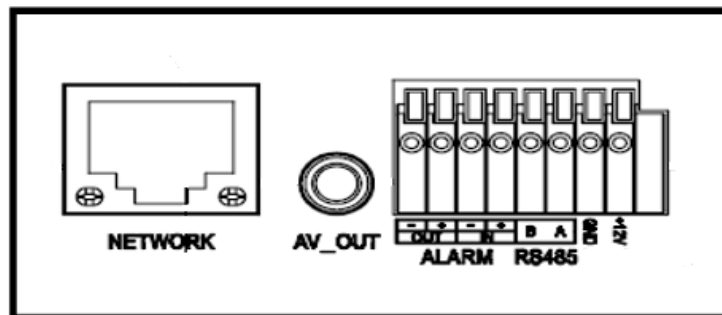
System Contents

Please check the following items before installation. If any items are missing, please contact the dealer.

Qty	Description
1	ED-G
1	12V Power Supply
1	TV out RCA cable
1	Quick Start Guide

Connection

Refer to the illustration below when following the Configuration steps.



NOTE: Choose Option A if using the power supply. Choose Option B if using a Power over Ethernet (PoE) switch.

Option A

Step 1: Insert the power adapter's positive (+) bare wire into the +12V DC port on the ED-G. Insert the negative (-) bare wire into the ground (GND) port of the ED-G using a screwdriver to press on the terminals. Plug the other end of the adapter into an AC power outlet.

Step 2: Plug an RJ45 Ethernet cable into the network port. Plug the other end into a hub, switch or router.

Option B

Step 1: Plug an RJ45 Ethernet cable into the network port. Plug the other end into a Power over Ethernet (PoE) switch.

Configuration

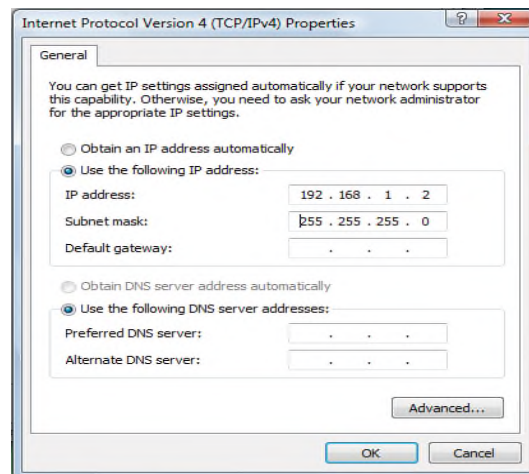
Connect the ED-G using Static IP

Encoder default IP 192.168.1.100

Decoder default IP 192.168.1.101

Step 1: Connect your PC and the ED-G to the same network.

Step 2: Set the IP address of your PC to 192.168.1.X. Set the subnet mask of your PC to 255.255.255.0.



Step 3: Open Microsoft Internet Explorer on your PC. Type 192.168.1.100 as encoder and 192.168.1.101 as decoder in the address bar.

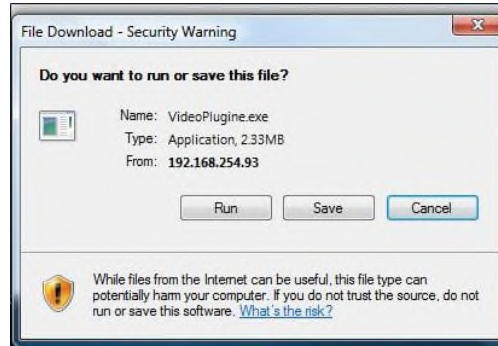
Step 4: A pop-up window will appear with prompts for a username and password. The default administrator username and password are both set to "admin" at the default factory configuration.



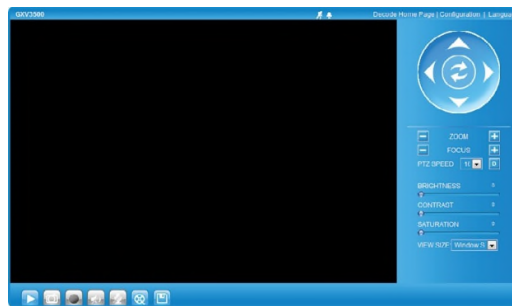
Step 5: Once you log into the ED-G's web interface, the device will indicate that you need to install or update the video plugin.

You need to install or update the video plugin, please refresh the page after the download and install! Click Download!

Step 6: Save the VideoPlugine.exe file and run it on your computer. Then restart Internet Explorer. You should get a confirmation message regarding the installation of the plugin.



Step 7: Once the installation of the plugin is complete, you will see the web page shown in the screenshot on the next page. Click on the play button to view the video feed.



Step 8: Click through the menu on the left-hand side of the web GUI for more advanced configuration parameters.