

CAM-DVR-iBox Instructions

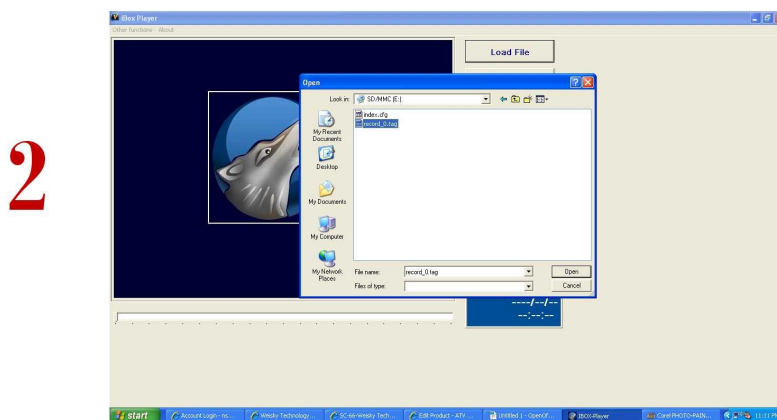
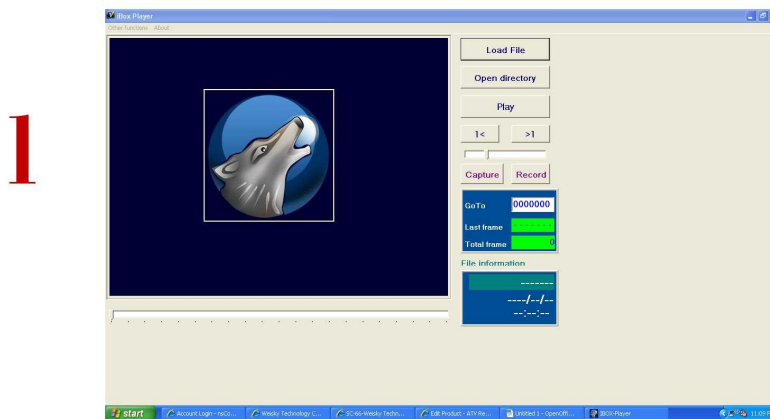
If using the CAM-DVR-iBox with a new SD card for the first time.

- (1) Insert the new Micro SD Card into the camera with the **camera powered off**.
- (2) Connect the camera to a composite video monitor.
- (3) Power up the camera and the camera will format the card and create a file system.
Note: the onscreen display will read: SD Format Disk. The file system will take about 30 seconds for a 2GB card and while this is taking place the blue and green lights on the camera will be flashing.
- (4) Once the file system is created the camera will read: **LOAD SD** and **SD:OK**
The green LED will be flashing and when motion is detected the blue LED will flash and the onscreen display will say **REC** and have an **M** at the bottom of the screen.

Note: Do Not Remove or Insert the SD card into the Camera while the camera is powered on!

To view files on the SD card:

- (1) Remove the SD card from the camera.
- (2) Insert the SD card into your computer.
- (3) Open the **iBoxPlayer_en_oem_v2.8ex** viewer program. (The screen will look like example 1 below.)
- (4) Click the **Load File** button and find the SD card.



- (5) Click the file **record_0.tag** and the file will appear in the **file name** box as in example 2 above.
- (6) Now click **Open**. When the video appears you can view the frames with the **Play** or the **1<** or the **>1** buttons.

While viewing the video you can **Pause** and use the **Capture** button to save individual frames in a file as JPEG images. Note the program will select the folder where the JPEG images will be stored. After the JPEGs are created you can view them with the **Open directory** button or any common picture viewer.

To set the clock in the camera:

- (1) Insert the SD card in the computer.
- (2) Start the **iBoxPlayer_en_oem_v2.8ex** viewer program.
- (3) Click the **Other functions** button.
- (4) Click **Time Sync**.
- (5) Find the SD card drive in the flyer box on the right side of the pop-up window as shown in the example below.
- (6) Click **Express time**. A new window will appear saying: **“Time sync to:c:\timesync.bin, Insert the SD card into the iBox for sync up!”**
- (7) Click **OK**.
- (8) Now quickly remove the SD card from the computer and insert it into the camera and power up the camera. The camera will read the time sync file and then delete it.

